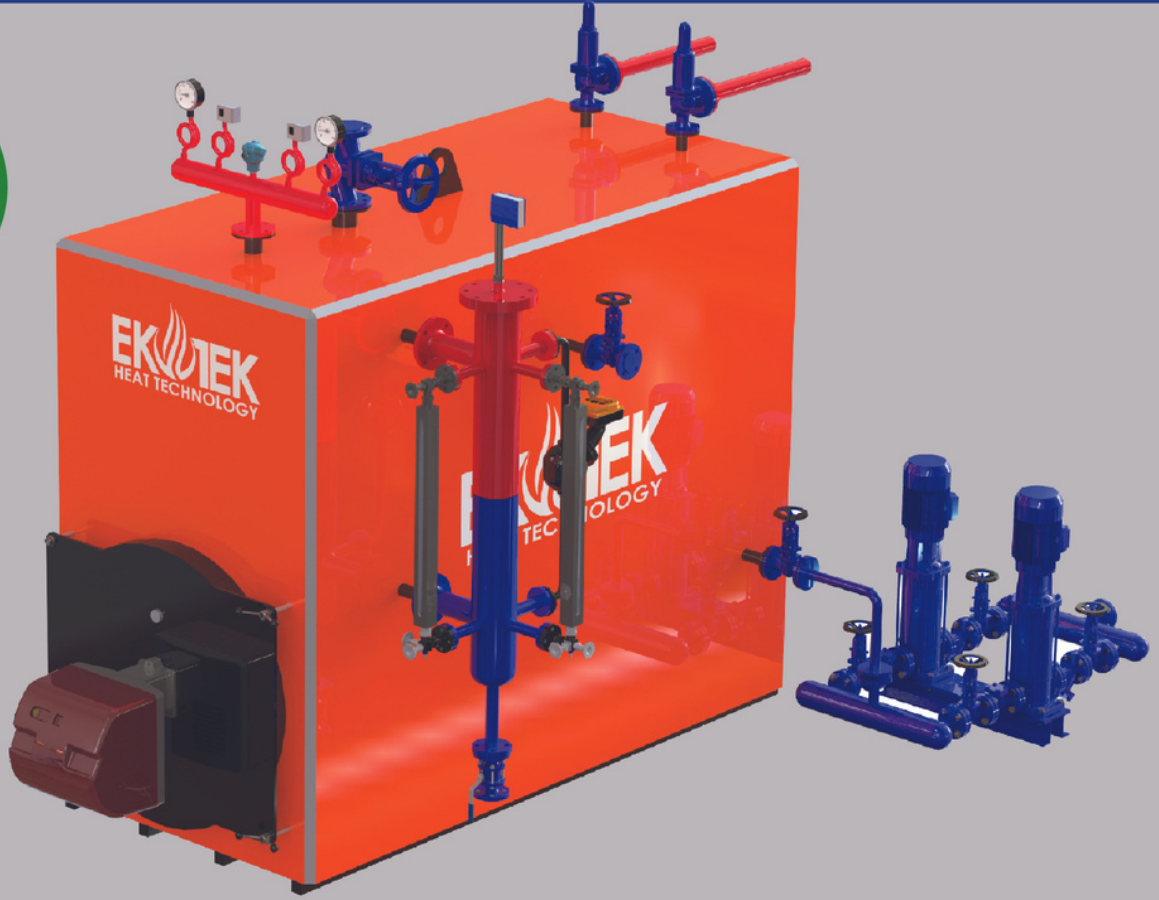


# SHIELD SERIES

400 kg/h-16.000 kg/h steam production capacity  
Working pressure between 3 - 16 bar

HIGH  
CAPACITY  
HIGH  
EFFICIENCY



- It offers comfortable and highly efficient combustion performance with its low counter pressure values.
- With its 3-pass design, the combustion surface is used in the most efficient way by ensuring the contact of the flame smoke with the entire combustion surface.
- Heat loss is prevented thanks to strong insulation with glass wool, rock wool and ceramics.
- Ekotek Heating Technologies recommends all the accessories used in package system steam boilers and burner systems of known brands.
- Ekotek Heating Technologies 5 types of safety systems are used in all steam boilers. All safety systems, including steam temperature, mechanical pressure, digital pressure, safety valve, chimney temperature controls, as well as boiler feeding pumps, are used in double standard packages.
- PLC control system can be added upon request.
- If you want to be in control, you should definitely see our optional options. Control your power with Ekotek technology. With optional options; Plc Touch screen controlled, Modbus RTU (Remote Terminal Unit Rtu) is completely under your control.

**% 100 SAFE , USER-FRIENDLY**



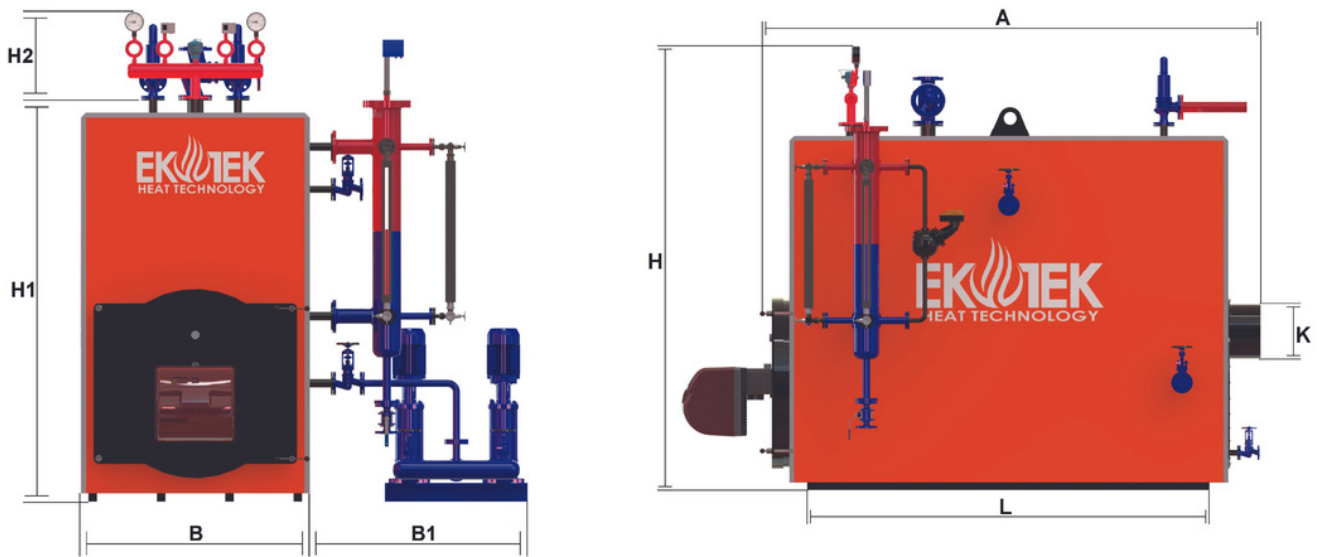
**Min 291 kW - Max 11628 kW**



# LIQUID / GAS FUEL, THREE PASS, STEAM BOILER



- There is no risk of explosion.
- Our boilers do not cause noise pollution with their silent operation.
- With its stylish appearance, it is noticed with its compatibility in the environment it is in.
- It is easy to assemble.
- Easy to maintain
- Upon request, our steam boiler can be delivered as a package with all its accessories.
- Every stage of our production is carried out under assurance by our quality control teams.



MODEL	CAPACITY				Dimensions								WATER VOLUME	BOILER FLANGES					MIN. CONDENSATE TANK CAPACITY	COUNTER-PRESSURE	SMOKE TUBE	INSULATION PROPERTIES	RECOM. MIN CHIMNEY DIMENSIONS		APPROXIMATE WEIGHT			
	M <sup>3</sup>	KCAL/H	KW	MW	KG/H	A	B	B1	H	H1	H2	K		L	LT	DN	DN	DN					DN	DN		DN	DN	DN
SHIELD 10	10	250.000	291	0,29	400	2150	1100	1000	2500	1950	550	250	1450	840	50	25/40	32	40	32	40	32	500	1	57-76,1	100	300	250	1360
SHIELD 15	15	375.000	436	0,44	600	2550	1170	1000	2550	2050	550	300	1850	970	65	25/40	32	40	32	40	32	750	1	57-76,1	100	350	300	1850
SHIELD 20	20	500.000	581	0,58	800	2800	1250	1000	2900	2350	550	350	2100	1055	65	25/40	32	40	32	40	32	1000	1	57-76,1	100	400	350	2270
SHIELD 25	25	625.000	727	0,73	1000	3100	1325	1000	3050	2500	550	400	2400	1230	80	25/40	32	40	32	40	32	1000	1	57-76,1	100	400	400	2950
SHIELD 30	30	750.000	872	0,87	1200	3250	1410	1000	3170	2620	550	400	2550	1650	100	32/50	32	40	32	40	32	1250	1	57-76,1	100	450	450	3780
SHIELD 35	35	875.000	1017	1,02	1400	3350	1450	1000	3400	2850	550	450	2650	1980	100	32/50	32	40	32	40	32	1500	1,1	57-76,1	100	500	500	4350
SHIELD 40	40	1.000.000	1163	1,16	1600	3500	1500	1000	3700	3150	550	500	2550	2370	100	32/50	32	40	32	40	32	1750	1,1	57-76,1	100	550	550	5200
SHIELD 50	50	1.250.000	1453	1,45	2000	3500	1550	1000	3700	3150	550	550	2550	2715	125	40/65	32	40	32	40	32	2000	1,35	57-76,1	100	600	550	5700
SHIELD 60	60	1.500.000	1744	1,74	2400	4050	1670	1000	3850	3300	550	550	3100	2950	125	40/65	32	40	32	40	32	2500	1,35	57-76,1	100	650	600	6350
SHIELD 70	70	1.750.000	2035	2,03	2800	4200	1750	1000	3900	3350	550	600	3300	3185	125	50/80	32	40	32	40	32	3000	1,35	57-76,1	100	700	650	7250
SHIELD 80	80	2.000.000	2326	2,33	3200	4350	1770	1000	4000	3450	550	650	3450	3950	150	50/80	32	40	32	40	32	3500	1,5	57-76,1	100	700	650	7900
SHIELD 90	90	2.250.000	2616	2,62	3600	4550	1850	1000	4100	3550	550	650	3600	4700	150	50/80	32	40	32	40	32	4000	1,5	57-76,1	100	750	700	8650
SHIELD 100	100	2.500.000	2907	2,91	4000	4700	1925	1000	4170	3620	550	700	3750	5180	150	50/80	32	40	32	40	32	4000	1,7	57-76,1	100	750	700	9150
SHIELD 125	125	3.125.000	3634	3,63	5000	5100	2000	1000	4350	3800	550	750	4100	6900	150	65/100	32	40	32	40	32	5000	1,7	57-76,1	100	800	750	10500
SHIELD 150	150	3.750.000	4360	4,36	6000	5350	2100	1000	4600	4050	550	800	4500	8400	200	65/100	32	40	32	40	32	6000	1,85	57-76,1	100	850	800	11320
SHIELD 175	175	4.375.000	5087	5,09	7000	5700	2200	1000	4700	4150	550	900	4750	9150	200	80/125	32	40	32	40	32	7000	2	57-76,1	100	1000	900	12200
SHIELD 200	200	5.000.000	5814	5,81	8000	6000	2250	1000	4850	4300	550	1000	5050	9950	200	80/125	40	40	32	40	32	8000	2	57-76,1	100	1100	1000	13000
SHIELD 250	250	6.250.000	7267	7,27	10000	6500	2375	1000	4950	4400	550	1100	5400	10750	250	80/125	40	40	32	40	32	10000	2,15	57-76,1	100	1200	1100	14100
SHIELD 300	300	7.500.000	8721	8,72	12000	7000	2450	1000	5100	4550	550	1300	5750	11300	250	100/150	40	40	32	40	32	12000	2,5	57-76,1	100	1400	1300	15000
SHIELD 350	350	8.750.000	10174	10,17	14000	7400	2600	1000	5150	4650	550	1500	6100	12100	250	100/150	40	40	32	40	32	14000	2,5	57-76,1	100	1500	1400	15600
SHIELD 400	400	10.000.000	11628	11,63	16000	7850	2650	1000	5250	4750	550	1500	6500	14000	300	100/150	50	40	32	40	32	16000	2,85	57-76,1	100	1600	1500	16250

EKOTEK HEAT TECHNOLOGIES HAS THE RIGHT TO MAKE CHANGES IN DIMENSIONS, WEIGHTS AND MODELS WITHOUT NOTICE ACCORDING TO THE CHANGE IN STANDARDS, DESIGN, ETC.

NOTE: The recommended chimney diameter is calculated as an average of 400 m altitude. The diameter of the chimney is the minimum size and may vary.

THE DATA IN THE TABLE IS MADE BASED ON 8 BAR PRESSURE. DATA MAY VARY DEPENDING ON PRESSURE.